

The Kurrajong-Comleroy Historical Society is dedicated to researching, recording, preserving and championing the history of "the Kurrajong", the district bounded by the Hawkesbury River at North Richmond, the Grose River, "Cut Rock" at Kurrajong Heights, along Comleroy and Blaxlands Ridge Roads to East Kurrajong, and to the Colo River. "The Millstone" refers to the Little Wheeney Creek millstones on display at Kurrajong Memorial Park. Logo designed for the Society by artist Tony Dixon.

IN THIS ISSUE

➤ Community Centre

A Community Centre for Kurrajong and a home promised for the Society

➤ St Gregory's centenary

Reports on the centenary week's celebrations

➤ Old Kurrajong brickworks

The old Kurrajong brickworks and how the bricks were made

➤ Proposed trip to Comleroi

The Society is planning a trip later this year which will follow the route pioneered by Ben Singleton and others to the Hunter region and will include stops at Putty, Warkwarth and Comleroi

2004/2005 COMMITTEE

President: Jennifer Stackhouse

Vice President: Kathie McMahon

Secretary: Val Holland

Treasurer: Joy Shepherd

Publicity Officer: Kathie McMahon

Research Project Officer: Frank Holland

Acquisitions Officer: Val Birch

Minute Secretary: Pat O'Toole

Millstone Editor: Greg Upton

Committee Members: Airdrie Martin, Marguerite Wyborn

COMMUNITY CENTRE SPARKS DEBATE IN KURRAJONG

A proposed Community Centre for Kurrajong has created a stir in our usually quiet village of Kurrajong. The sticking point is the proposed location as Jennifer Stackhouse explains.

Following a community meeting on 18 November and a General Meeting of Council on 30 November it has become obvious that community groups and residents in the Kurrajong area agree on the need for a community building to serve as a Community Centre. There are differing opinions about where such a building should be built. For what's on offer, see 'What is a Community Facility' (page 2).

Your opinion on the location of the Kurrajong Community Centre will be canvassed in a survey by Hawkesbury Council. The survey will be circulated in mid to late January and the results discussed at a council meeting in late February. It is important for all residents and potential users of the centre to think carefully about where the building will be of most value to the community and to fill out and return the survey.

Once a location is decided, a community-based committee will be formed to steer the design of the final building.

A home for the Society

As members of the Kurrajong-Comleroy Historical Society, one of the groups earmarked as a potential user of the centre, we have a strong interest in where the building will be located. The choice boils down to a site in the village or a site in McMahon's Park, approximately one kilometre from the village centre.

Members of the committee and a number of vocal members have indicated a strong

preference for a central, village location. Our reason for this preference is that we wish to use the centre as a meeting place, a place to store our records and resources and as a historical research area for locals and visitors. A centre in the village with access to the main road will naturally have more presence than one tucked away in McMahon's Park. As many of our activities are in the evening, safety and access are also an issue for members to consider.

The carpark between the Kurrajong Post Office and the CWA Hall has already been earmarked for an extension. Some tree removal and clearing was undertaken more than six months ago but no work has occurred. The extra parking has been accommodated under the proposed Community Centre with access from Lenords Lane. A building in sympathy with the village and landscaping of the carpark would also add considerably to the look and feel of our historic village, helping it to become a more viable and effective tourist destination and of great benefit to the businesses in Kurrajong.

Funding concerns

Due to the nature of the funding, the Community Centre can only be built on land owned by the council. Proposed sites include McMahon's Park (adjacent to the existing building), Memorial Park, and land in Timms Hill Road, which is owned by the council and is adjacent to the Integral Energy site and substation.

Continued on page 2

In a bid to show Council that another level site was available in Kurrajong (behind the carpark between the Kurrajong Post Office and the CWA Hall), Ken Bennett, a member of this society, organised for a local architect, Barbara Tarnawski of Crowther Tarnawski at North Richmond, to prepare a concept plan for the site. This plan (shown on page 3) shows the location of a building, parking and an adjacent playground. It was well received by councillors and led to council agreeing to seek further community consultation before a final decision on the location of the centre is made in February.

Users of McMahon's Park are lobbying strongly for their park to be the site for the new Community Centre. There are several strong arguments for the Centre to be located in the Park including availability of a level building site, which could mean larger floor space for the available funds, and an existing building that could be enlarged. The management team at McMahon's Park also see the location of a new building in the Park as a way to assure that their much-needed car parking area goes ahead.

Points against the selection of McMahon's Park include its existing use as a sporting facility (it is often full to overflowing), poor access for both traffic and pedestrians, remote and poorly lit at night, and its distance from the commercial centre of Kurrajong. There are also mature native trees that would need to be removed to make way for a new building.

The options in detail

A. VILLAGE LOCATION

1. Memorial Park, Kurrajong Village

Pros – Centre of village, well lit, adjacent to existing open space and play ground, town water and sewerage available, well accessed by made footpaths, close to public transport.

Cons – Existing war memorial role of park, existing fire shed, steep site with little level land.

2. Timms Hill Road site, Kurrajong Village

Pros – Centre of village; well lit; close to existing open space and play ground; town water and sewerage available; well accessed

What is a Community Facility?

Originally billed as a 'hall' for Kurrajong, what is actually on offer is a Community Centre, not a large hall. Similar centres exist in other parts of the Hawkesbury including North Richmond. Indeed, Kurrajong is the only area in the Hawkesbury without a Community Centre. This centre will service the needs of some 10,000 local residents.

Around \$550,000 in funding from Section 94 funds has been set aside to build the Kurrajong Community Centre. The money has been raised from a levy on development that has occurred in the area in the past decade.

A Community Centre building includes a large meeting room that can be used as a hall seating around 100 people, together with a kitchen, toilets, offices and storage areas. Other facilities include a play area for children and parking.

In other parts of the Hawkesbury the Community Centres are used as venues for special interest groups to meet, provide a place for a visiting library, baby health services and after school or vacation care, and also provide storage space for local groups. Some of the special interest groups who make use of Community Centres for their activities cover the arts, craft, dance, discussion groups, exercise classes and groups like the historical society who stage talks, displays and offer information.

The centres are in use by day and night and are well patronised in other areas. In general these centres are located in a central area, adjacent to shops and other commercial premises. Most have level access for walking and provide car parking. Many also have direct access to public transport.

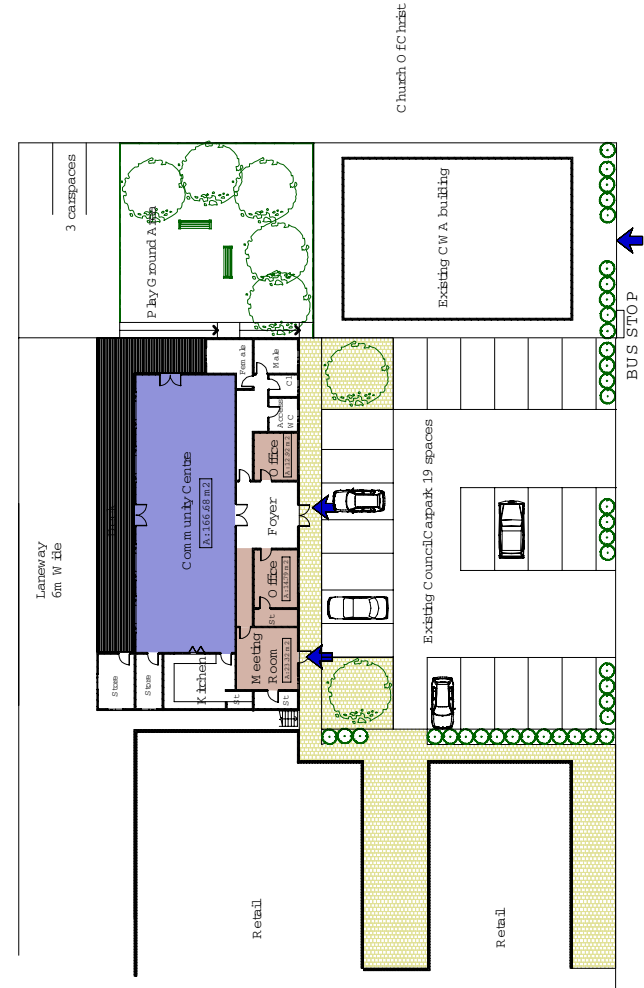
Historical perspective

As an historical society it is interesting to look back into the town records to see if a hall or other community building was ever planned for the Kurrajong Village. A site was owned by the council and until the late 1990s earmarked for a community hall or building. Unfortunately this level site beside the Baptist Church in Old Bell's Line of Road, was sold and is now privately owned and built on.

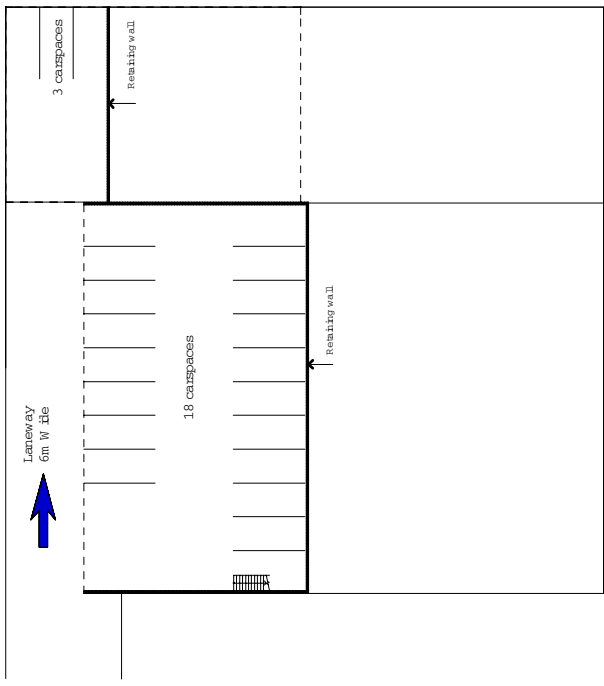
The CWA Hall and the land it sits on is owned by the CWA (Country Women's Association). This hall seats around 80 people and is generously made available by the CWA to community groups. A community centre sited next to the CWA Hall would add to the cultural amenities in the village.

Members of the CWA Hall have generously offered the land at the rear of their block for a playground if the proposed new Community Centre is built next door.

One other site of interest for future development in Kurrajong is the electricity substation site, which is a large block of level land adjacent to the old Kurrajong Railway Station which was well served by the train known as the Pansy. This site is not owned by the council so cannot be used for Section 94 funds, however, it is a site to keep under consideration in the future. It could be the very place to build a large hall within an interesting historic precinct and is right next door to council owned land in the centre of the village.




Ground Floor Plan



Basement Plan

- Areas**
- Community Center 166.68 sq m
 - Office Space 27.71 sq m
 - Meeting Room 23.32 sq m
- Carpaces**
- Existing 19 spaces (1 disab)
 - Proposed 18 undercover
 - Total on site 37 spaces
 - CWA 3 spaces

Preliminary



PROFESSIONAL ENGINEERS

Proposed Development
At: Kurrajong - Community Centre

Drawn By: D.H.B.
Date: 29/11/04
Scale: AS 1:100

Checked By: D.H.B.
Date: 02/01/04
Scale: AS 1:100

Drawn By: D.H.B.
Date: 29/11/04
Scale: AS 1:100

Project No: 04233

Project Name: Kurrajong - Community Centre



ST GREGORY'S CHURCH CENTENARY WEEK

by made footpaths; close to public transport; adjacent to historic site of Kurrajong Railway Station; no neighbours; improves a current eyesore.

Cons – Steep site with little level land; requires major earthworks to form a building envelope, which could reduce funds available for construction; level space required for on site parking.

3. Kurrajong Car Park site (which includes undeveloped land at the rear of the existing car park), Kurrajong Village.

Pros – Centre of village; well lit; walking distance to existing open space and play ground; adjacent to commercial sites; town water and sewerage available, well accessed by level made footpaths, close to public transport (bus stop on road adjacent to site); adjacent to an existing hall; existing parking; extra land promised for a playground by CWA; a local excavation company has offered gratis excavation and site works if this site is selected; improves a current eyesore; existing rear lane entrance.

Cons – Site is partially level and partially sloping requiring excavation to make undercover parking which may add to construction costs; small playground area only available (but within walking distance of Memorial Park); two residential neighbours at rear.

B. OUTSIDE VILLAGE CENTRE

McMahons Park, McMahons Park Road, Kurrajong.

Pros – Level land available, space for additional car parking, existing sporting facilities including oval and existing structures.

Cons – 1km from village centre; no made footpaths or public transport; narrow access road; removal of mature gum trees required to create a building envelope; dark and remote particularly at night; surrounded by established homes.



Celebrations to herald the centenary of the opening of Kurrajong's St Gregory's catholic church were held between December 4th to 10th. Here are some accounts of the activities attended by members of the Society.

Society's group visit

by Kathie McMahon

On Tuesday 7th December 2004 the Society had a day visit to St Gregory's Church as part of a series of events to celebrate the 100th anniversary of the opening of the new St Gregory's Church.

The group started with a tour of the graveyard. Rita Crane led the group pointing out grave sites of many early settlers in Kurrajong. The earliest marked grave is of Phillip Butcher, aged 14yrs, and who died 21st January 1845. From the old grave site we looked at the new grave sites and what a beautiful view these people have. Afterwards we toured inside the church. There were many artefacts on display including a picture of the old St Gregory's Church. The lithograph of a station of the cross that was originally in the old church was given to Mary McMahon (nee Hennessy) when the new stations of the cross were installed as a thank you for her dedication to the old church. She had kept it in her family for many generations and it was given back fully restored by Maria Williams, who is a descendent of Mary McMahon. The stations of the cross currently in the church are oleographs and have been restored by Chris Masters of Bilpin.

Other features inside St Gregory's include the beautiful stained glass window over the altar, designed by Steve Mullen. The original statues have been restored and the new alter furnishings designed by parishioners Peter Humphrey and assisted by Ron Crane are all in Australian native timbers.

Many thanks to Rita Crane and Margaret McMahon for their talks on this day.

After a very interesting morning we had lunch at the new Kurrajong restaraunt Sassafrass. A beautiful lunch was had by all.

A brief history of the church

The land where St Gregory's now stands was originally owned by John Howe who was granted 360 acres at Kurrajong on 8th

October 1810. John Howe sold the land to Richard Fitzgerald on 23rd June 1828. Richard died on 25th May 1840 aged 68 yrs and he left this land to his son Robert.

On 15th September 1839 a meeting was held in the house of James Walsh with the purpose of building a church and schoolhouse. Richard Fitzgerald donated an acre of land and by December 1839 the first stone was laid for St Gregory's Church. A school for all denominations was established here at the same time and served the district until Comleroy School was opened in 1880.

On the 27th October 1840 the new church was consecrated by His Grace Polding. This was the day after the opening of St Matthew's Catholic Church in Windsor. St Gregory's was built of ironbark and could accommodate 400 people. At Kurrajong Mass was said every second Sunday of the month with instruction and catechism at 4:00 pm the same day. The priest travelled from Windsor by horse and sulky. It was said to have about 150 communicants.

By 1855 the church was fenced and a cottage for the teacher had been built. It was rented out for eight pounds a year if the teacher had other accommodation.

In 1859 St Monica's church in Richmond was built and St Gregory's became part of Richmond parish.

By the 1900s the building was in need of replacement.

On the 21st December 1902 the foundation stone of the new St Gregory's church was blessed by the His Grace Kelly.

The next four years of fund raising netted four hundred and sixty eight pounds and the collection for the opening of the church yielded another one hundred and two pounds. Bricks for St Gregory's came from East Kurrajong from the same quarry as the Comleroy Road School of Arts. Mr. A. Quinn carted the bricks from John Riley's kiln at Tennyson. The sacristy was added later so the bricks look slightly different.

Continued on page 5

Ecumenical Centenary Service

Before the church was consecrated on Wednesday 4th December there was a grand tea held and also a dance. Both were well patronised. The church was opened and blessed on 17th December 1904 by His Grace Archbishop Kelly. Final cost for St Gregory's church was seven hundred and five pounds.

On 28th March 1930 land (Portion 288 in Kurrajong Parish, County Cook) was sold by tender to the Archdioceses of Sydney for the sum of sixty six pounds. This gave St Gregory's Church an extra four acres 25 perches. On 1st September 1952 portion 301 was transferred to Archdioceses of Sydney at a special price of one pound.

Material and facts are taken from the book St Gregory's Catholic Church 1839-2004. This book can be purchased from Rita Crane at a cost of \$20 [phone 4573 1354].

by Joy Shepherd

Val Birch and I were privileged to attend the Centenary Service at St Gregory's, Kurrajong on behalf of the Society on Saturday 4th December 2004.

We were made so welcome to this memorable service, and were impressed with the beauty of the restorations, the glorious singing, and the feeling of "belonging" as representatives from so many denominations joined together to celebrate this event.

The original St Gregory's was built in 1840, but after falling into disrepair, was replaced by the current church in 1904. As one speaker, Stephen King quoted from the Windsor and Richmond Gazette:- "After five years of planning, which included two years of building, the church was opened by Archbishop Kelly, on behalf of Cardinal

Moran who was ill, on Sunday 11th December, 1904. The total cost of the project was 705 pounds. Fundraising had contributed 468 pounds." The Windsor and Richmond Gazette said that Fr O'Brien, the Parish Priest, "appreciated the loyal and generous spirit of the people in raising so much of the money. The Catholics were only a handful, but they had subscribed liberally, and had been helped in a most handsome way by generous-hearted, kind and cordial neighbours."

He went on to say – "In true Catholic tradition of imposing a feeling of guilt, the Archbishop urged the parish not to rest until the whole of the debt was liquidated and the church handed over to God, because it could not be handed over to Him while there were still claims on it." This exhortation raised a further 102 pounds when the plate was passed around. It seemed that God would have to extend credit for the remaining 135 pounds.

So there has been a history of cooperation

Continued on page 6



KCHS group inside St Gregory's church during their day tour as part of the centenary week celebrations. Photo: Ian O'Toole.

amongst the different Christian denominations in the Kurrajong area, especially associated with the building of St Gregory's, in terms of financial contributions and voluntary labour. It is a notable point of interest that this spirit of ecumenism has been alive for all of our history, even in so called less tolerant times. Let us now join in thanksgiving for all who have contributed in any way to the history of St Gregory's at Kurrajong.

The highlight of the service was the presentation of a lithograph that had hung in the original Church. It had been passed down through several generations of the McMahon family, and was donated back by Maria Williams, of Bathurst.

Following the service, we were treated to morning tea at the CWA hall, prepared by the parishioners, and ably served by the CWA ladies. This was a time to chat, meet up with old friends, and view the great historical display, depicting some of the story of St Gregory's and its members over the years. Our Society has also been presented with a large number of artefacts, including tapestries, paintings and embroideries from the early 1900s, handed to us from a descendent of one the early families of St Gregory's. These are still being collated, and we will give more detail in our next issue of the The Millstone.



Photos from the KCHS St Gregory's day tour on 7th December

[All photos courtesy Ian O'Toole]

(Top) Cemetery tour

(Centre) Rita Crane explains all

(Left) Receiving standing orders!



Four Wheel Drive Expedition to the Ruins of the Old Kurrajong Brickworks located near Little Wheeny Creek

By Les Dollin

On 24 November 2004 the KCHS was given permission to do a detailed inspection of the historical Kurrajong Brickworks site on land that was formerly part of Camp Mackay.

Jodi from the 'Life' Adventure site (formerly Camp Mackay) escorted Frank and Valerie Holland and myself by unlocking the access gates to the ruins. We traveled by four wheel drive vehicles down through the paddock until we reached the ruins site alongside a little creek.

The brickworks consisted of at least two kilns, a clay mixer, drying areas and a large clay pit where a type of yellow to reddish coloured clay had been dug out by hand. Interestingly enough, the best clay was most probably under the brickworks road as the road becomes quite narrow as it follows around the edge of the clay pit.

Next to the clay pit are the remains of a wood fired brick kiln. This kiln we call the Bottom Kiln. It had a unique design. The main part of the kiln was in a huge hole that was dug into the side of the hill. The arched roof of the kiln was above ground level. Setting the kiln into the ground stopped the heat from escaping through the brick walls - a very clever idea.

The kiln was quite large compared to non-commercial kilns of today, measuring 3 metres long by 3 metres wide. We would have had to excavate down to the brick floor to obtain an exact measurement of the height. We considered that it was probably about 2.5 metres to the top of the arch. Jim Hawkins, who had personal knowledge of the site when it was operating, recalls that the top of the arch had just a small hole in it to maximise heat retention.

In front of the kiln was the firebox which also measured 3 metres by 3 metres - that's one big firebox! Today's average wood kiln uses about 3 cords of wood to fire the bricks - that's 384 cubic metres of wood. It takes over three days of constantly stoking the fire to heat up the kiln and another three days to cool down enough to remove the bricks.

On the topside of the brickworks road are the remnants of the Top Kiln. This kiln was

built on top of the ground in a similar design as most modern conventional kilns. It had the same dimensions as the Bottom Kiln. In close proximity and also above the brickworks road, there appears to be the ruins of yet another kiln that is partly dug into the ground.

So, how did they make the bricks?

1. Clay would have been dug out of the ground using picks and shovels.
2. The clay would have been carried in buckets to the horse-operated mixing drum. A horse moved in a circular pattern to turn the paddle inside the drum. Here the clay would have been mixed with water to form a mud solution.
3. This mud would have been poured into wooden moulds in the shape of bricks.
4. Then the soft bricks would have been dried in the sun over many weeks.
5. The bricks were then stacked loosely in the kiln with air spaces between them.
6. The kiln was brought slowly up to the correct temperature, which may have taken two days. The kiln was kept at that temperature until the bricks were cured. The kiln was then allowed to cool down. This process may have taken several days.
7. Finally, the bricks were inspected for cracking or uneven heating. Those that passed inspection were then stacked ready for use.

Jim Hawkins and his father used to supply the wood for these kilns during the soldier settlement days. Another family used to operate the kilns. I feel that these kilns may date back even earlier than the soldier settlement days because hundreds of primitive convict made bricks have been found at the nearby convict camp. These bricks look similar in composition to the bricks found at the kilns on the former Camp Mackay property.

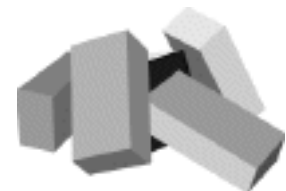
Following the brickworks road further down the hill, we found traces of another

road that may have been part of the road that led from Little Wheeny Creek flour-mills to the grain store at Wilberforce. This old grain road was probably one of the first government roads built in the district.

The brickworks road and the grain road most probably intersected at the original crossing over Little Wheeny Creek. It would appear that drays full of wheat crossed the creek where water from the top mill-pond used to back up. The grain road took a magnificent sweep out of the crossing, then travelled downstream alongside the mill-pond until it swept upwards towards the convict camp

One could imagine that we were walking along these two historic roads - to a time in the early 1800s of wheat fields, bullock teams, flour-mills. Then to move forward to the soldier settlement years when clay pits, brick-kilns, yoked draught horses and hand made bricks formed part of the fabric of the Kurrajong.

These sites may soon be affected by proposed development of this area by the current land owners. Further details will be given in a forthcoming issue of The Millstone.



Society's new Publicity Officer

Kathie McMahon has volunteered to act as the society's Publicity Officer. She is also the Society's Founding President and Vice-President. This important role will help promote our activities far and wide and raise the society's profile in local publications. Thanks Kathie!



COMPUTER DONATED TO THE SOCIETY

By Jennifer Stackhouse

With our huge photograph collection, much of it scanned and available as digital images, the one thing we've really needed has been a good computer. A white knight in the form of Bob McCallum, Chairman of the Bendigo Bank, has come to our aid by donating a computer to the society. We will now be able to access our files and, by combining it with a printer, run off some of our images and information as needed. A big thank you to Bob and the Bendigo Bank.



Generous benefactor: Bob McCallum, Chairman, Bendigo Bank, who recently presented the society with its own computer. Photo: Ian O'Toole.



SOCIETY'S LIBRARY

By Jennifer Stackhouse

The Society has a fledgling library, under the care of Acquisitions Officer Val Birch. We hope to make these books available to society members at future meetings. The books have been donated by society members and some have also been purchased from society funds. Thanks too, to Jan Livingston and Vera Bentvelsen for covering our books. A list of titles (including an indication of donors where appropriate) will be included in a forthcoming issue of the Millstone.



Val Birch with a selection of books from the society's library. Photo: Ian O'Toole.

TSUNAMI APPEAL

We have all been impacted by the horrific devastation in South East Asia and no doubt have supported the various appeals for donations of money. We have been approached to provide support to a very worthwhile cause in Aceh.

Father Reilly who is known for his work with homeless children in Sydney and for the orphanage he set up in Bali following the terrorist bombing has been granted funds to establish an orphanage. An appeal is being made for good second hand children's clothes (suitable for tropical conditions) and used children's toys. Most of us in the Society are a bit beyond having young children but perhaps our extended families may be in a position to help.

There are two ways in which goods can be delivered, the first is direct to the appeal headquarters at 75-90 Keynons Road, Merrylands or to Frank and Valerie Holland at 123 Comleroy Road, Kurrajong (4573 2226) and they will arrange further delivery to Merrylands. It would be helpful if goods are clean and packed in a box or something similar.

CAMP MACKAY UPDATE

By Val Holland
Phone 45732226

We have had some exciting additions to our research records of Camp Mackay. The bush telegraph has assisted us in unearthing 94 early photographs of the Camp's developmental phase. These photographs were kindly loaned to us to copy and archive on disc, by relatives of Percival Stevens the founder and first Camp Superintendent of the camp. Thanks must go to Joy Shepherd and Valerie Birch without whose constant enthusiasm to store our records has fortunately saved these images.

Another source generously loaned us an old film, some written information that will take some time to evaluate and a couple of photocopies of photographs taken in about the early 1950s. This 16 mm film, on which is a couple of minutes footage of the early Camp Mackay, was recently viewed as a result of the sterling efforts of Ian O'Toole. Ian managed to run the film through an old projector after procuring parts and necessary bits and pieces through a wide range of sources. Many emails were sent back and forth as we watched the ongoing development of, what at times was a frustrating process. However, at the same time we felt enthusiastic about being involved on a mysterious journey that fortunately achieved a small pot of gold. The film will be shown at our March meeting.

A big thank you must go to Ian for never giving the project away and to his wife Pat who always had a smile. Both are members of our Society.

Gradually more information is coming forward from members of the community willing to share photographs and recollections with us. We are very grateful for this assistance as the project is quite a large one. Please let us know if there are any members of the Society who would like to become involved in the interesting task of gathering recollections from members of the community. We still have some people that we feel could assist us with Camp Mackay research and we would be happy to write a list of questions for members to present.

The research of the history of the Kurrajong district is very rewarding. It is one that helps to bind us together in the shared past and present endeavours of our community.

PROPOSED TOUR TO COMLEROI

By Val Holland

This is an advanced advice of the Society's trip to "Comleroi." A firm date is yet to be determined, however Monday, 2nd May is an early preference. Please contact Frank Holland (4573 2226 – before 1/2/2005) to express your interest in joining in on this trip.

The trip, by private cars, is aimed at traveling along Comleroy Road, Blaxlands Ridge Road and Singleton Road to Singleton. Stops along the way would include Putty, Warkworth and Comleroi – where possible there will be stops at other areas of significance, which can still be recognised from the early routes taken by Parr, Howe and Ben Singleton. This part of the trip will be organized so that anybody wishing to return home could do so that night.

You may recall that our last guest speaker, Andy Macqueen, outlined the journeys of Ben Singleton and others as they searched for routes to better pastureland. We know that many of these early explorers later received land grants in the Patrick Plains area, some in the area known as "Comleroi". One wonders if the naming of today's Comleroy Road is not a short version of the 'road to Comleroi', where cattle were agisted in the early 19th century. As we know Ben Singleton moved his family from Mill Road on Little Wheeny Creek to the area and the township of Singleton was named after him.

We contacted Andy (Author of "Somewhat Perilous"- the journeys of Singleton, Parr, Howe, Myles & Blaxland) – before Christmas and he advised then that he would like to join in on the trip if his commitments permitted. This would certainly add value and additional information, however if he is unavailable Les Dollin and/or Bryan Wyborn will be on hand to add their knowledge of the route and areas of interest. Les and Bryan are planning a preliminary outing to look at the Comleroy Road areas of interest prior to undertaking the trip to "Comleroi". Details will be advised in due course.

Additional activities for those wishing to stay over would include overnight motel (cost to be determined and dependent on numbers but not likely to exceed \$100 per room), a meeting with the Singleton Historical Society, a tour of the historical

museum and lunch at a fabulous (not overly expensive) restaurant in the Hunter Valley before returning home on day 2. Some members have already expressed a desire to remain for a third day for additional sight seeing. We are hopeful that we will be able to arrange a package deal for reduced accommodation cost for those staying on.

It should be a great trip so please give it some thought and let Frank know if you would like to be included so that we can start negotiating for the best deals.

HISTORIC WRITING COMPETITION

March is Women's History Month and Hawkesbury City Council is seeking stories about notorious women in Hawkesbury history. Notorious doesn't mean bad, but can encompass women who have been notable in some way.

There are categories for Adults (maximum 1000 words), High School (maximum 750 words), and Primary School (maximum 500 words). First prize is a \$50 book voucher. Second prize is a copy of 'Hawkesbury Pictorial' (embossed presentation copy) by Michelle Nicols OAM. There will be framed certificates for stories that are highly commended.

Entries should be typed on white paper, double spaced with margins in Times New Roman (or similar font) in 12 pt or larger. Enclose a cover sheet with all details including the title of the story, category, author's name, address and telephone number. Don't include your name on the story, it should only show the title and page numbers. Entries close Friday 4 February, 2005.

To find out more call 4560 4434, or to send entries, contact Carol Roberts, Administration Officer-Cultural Services, Hawkesbury City Council, PO Box 146, Windsor, 2756. For more information on Women's History Month see www.women'shistory.org.au



Of Interest ...

Val Holland has compiled the following information that may be of interest to members. For more details on anything mentioned below contact Val on 4573 2226.



New Publications Available

- "Hawkesbury Calender"- \$10- great gift or collector's item- Details Hawkesbury City Council 4560 4466.
- "Pictorial History of Hawkesbury"-by Michelle Nichols-\$24.95-plus \$5 if posted. History captured from original aboriginal inhabitants to present day. For sale at libraries at Windsor and Richmond or at Hawkesbury City Council.
- "Good Wards of Windsor" -by Olive Lawson-\$14-History of Ward family-Details 9456 3169.
- "The Riverstone Meatworks"-by Rosemary Phillis-\$30 plus \$10 postage at PO Box 8, Riverstone 2765, or from Blacktown Bicentennial Museum Garfield Road Riverstone on the first Sunday of the month between 11am-3pm.

For the following three publications details may be obtained from the Blue Mountains Historical Society on 4757 3824.

- "Eccleston du Faur" -by Joan Webb - \$14- Eccleston du Faur's achievements include his creation of the Ku-ring-gai National Park, his having played a major role in the establishment of the Art Gallery of NSW and bringing to public notice the scenic qualities of the Blue Mountains and the need to preserve the Grose River.
- "Cross Currents"-edited by J.P. Powell-\$16.50-Discussion of many topics relating to the Hawkesbury River's history.
- "Mary Reiby-Molly Igcognata"-by Nancy Irvine-\$21.95-well researched story of Mary and family.

Lectures and Outings

- Mt Tomah - Learn of Caley's historic exhibition in the Visitor's Centre 13 to 31 January 2005.
- Mt Tomah - Curley Caley Quercus Quest- \$5 - Includes garden entry, map, and small prize - An adventure for all the family.
- Blue Mountains Region Discovery programme - contact 47 878877 or www.nationalparks.nsw.gov.au or bluemtns.discovery@npws.nsw.gov.au
- 'Wheeny Creek Wander' - family walk - also 'Wheeny Creek Spotlight Walk' both on Saturday the 15th and 22nd of January 2005.
- Blue Mountains Historical Society inc will hold a walk through the lanes of Wentworth Falls on the 7th Feb. This is an easy 2 hour walk with stops. Carry water. Meeting at 9.30am for start at 10.00 am. Lunch afterwards is a drive to the Grandview at 174 Great Western Highway Wentworth Falls. Meeting at 12.30 for 1pm start. Cost \$18. Choice of three mains, with tea and coffee. Bookings BY SUNDAY 23RD JANUARY TO JO ADAM ON - 47 591022.

ROYAL AUSTRALIAN HISTORICAL SOCIETY will host the following two lectures that may be of interest. Both will be held at History House Auditorium:

- Wednesday 2nd of March 2005 at 1pm - Paul Innes will speak on the explorer Cox's crossing of the Blue Mountains. Cost \$5 for members or \$7 for non members.
- Tues 29th March 2005 from 5.30 for 6.00 pm - John Whitehead will talk on tracking the explorer John Oxley. Cost \$7. Bookings essential on 9247 8001.



General Interest

The December Journal of the RAHS included an article stating that historian Dr Ian Jack had received a Fellowship from the Society for his service to history. The Journal and History Magazine of the Society can be viewed on the website www.rahs.org.au.

Hawkesbury Family History Group

- Wright-Gott family anticipate holding another reunion in 2007. Details Robynne Winley-26 Millers Rd, Cattai 2756.
- Flood-Cross reunion on 26th June 2005 Contact Mary Ann (Douglas)-lois-mrnewman@pacific.net.au
- Gill family of Upper Colo-seeking information on descendants of Lawrence Gill and Emily Amelia Thornton aka Truman born England-1810. Contact Terry Gill on web at-terrygill@dodo.com.au or 1/ 381 Bourbong Street, Bundaberg 4670.

The photo below shows the view towards Grose Vale Road looking from Willow Glen Road. Kurrajong village is in the middle distance. Photo taken during the 1940s and is courtesy of Betty Upton.





Dates for your diary

* Wednesday 26th January 2005 - Australia Day and KCHS Birthday Celebrations

Keep the morning free for our breakfast birthday celebrations on Australia Day at Loxley on Bellbird Hill. Hear the bellbirds and enjoy a gourmet breakfast at one of our most prestigious and picturesque venues. See photographs of the original property and join our singers and musicians who will present some Australian songs and verse. What a delightful way to celebrate our birthday and Australia Day.

Where: Loxley on Bellbird Hill, Bells Line of Road, Kurrajong

Time: 9am-12noon

Cost: \$25 per head (bookings essential)

* Thursday 10th February 2005 - Historic tour of Kurrajong Heights

Steve Rawlings will conduct a historic tour of Kurrajong Heights including the old post office, Lochiel Cafe, Belmore Lodge, Kurrajong Heights Hotel, original Barker College site, and St Clements. Bring your lunch to be eaten at Wynella Gardens where Noella McPhee will be providing tea and coffee.

Where: Park your cars at Wynella Gardens, 1318 Bells Line of Road, Kurrajong Heights.

Time: 9 am (to beat the heat).

* Monday 21st March 2005 – Meeting and film showing

Join us for our regular bimonthly meeting. Take the opportunity to inspect our library and view an historic newsreel featuring Camp Mackay c. 1955.

Where: CWA Hall, Bells Line of Road, Kurrajong

Time: From 7.30pm

Cost: No cost; bring your own mug for supper

* Monday 23rd May 2005 – Meeting and guest speaker

Join us for our regular bimonthly meeting. We will be joined by local historian Bryce Bell, who will discuss the history of agriculture in the Hawkesbury.

Where: CWA Hall, Bells Line of Road, Kurrajong

Time: From 7.30pm

Cost: No cost; bring your own mug for supper

Coming events

- **History Lunch Club:** In the months where we don't have a regular night meeting (February, April, June, August, October) Kathie McMahon is organising an outing with lunch. The next meeting will be held on 10 February at Kurrajong Heights. If you want to be part of the History Lunch Club or have ideas for activities, contact Kathie McMahon on 4567 7105.
- **On tour:** The Kurrajong-Comleroy Historical Society is hitting the road, Comleroy Road and the Putty Road to be precise. We are arranging a trip to Comleroi in the Hunter Valley. The date is still to be finalised but will probably be mid-week in early May (see article on page 9). The trip can be done in a day but we are also looking at staying the night in the Hunter Valley and visiting other historic sites. If you are interested in joining the tour, contact Frank or Valerie Holland on 4573 2226.

Bookings

To book for any of these events, call Joy Shepherd on (02) 4571 1524. All cheques should be made out to the Kurrajong-Comleroy Historical Society and posted to KCHS, PO Box 174, Kurmond, 2757. Include your name, address and phone number along with the event you are booking for and the names of those attending.

Notes and requests

- Joy Shepherd is seeking input to a proposed future article on 'Pioneer Women of the Kurrajong'. If you have memories of such women from your family or community contact Joy on 4571 1524. There are many women who have worked hard within our community including Kurrajong midwife Sarah Howard. To set the ball rolling, Kathie McMahon has put forward a story about her great grandmother.
- 'Kids of Kurrajong' is the proposed theme for our next photographic exhibition that will be part of 'Back to the Kurrajong' in October. If you have photographs of children at play, school or on an outing, or perhaps have toys or reminiscences of games you played as a child in this area, we would be interested in hearing from you. Contact Joy Shepherd on 4571 1524.
- If you missed out buying a copy of Andy MacQueen's wonderful book 'Somewhat Perilous' about the early explorations of Singleton, Parr, Howe, Myles and Blaxland north from Kurrajong, you can contact him direct to buy a copy. Phone: (02) 4757 1083.

Deadline for next newsletter

The deadline for the next newsletter is Monday 28 February. The newsletter will be posted on Monday 7 March. If you have an item you would like to contribute to this or future issues, contact Jennifer Stackhouse on 4573 0836 to discuss the item. We welcome contributions.